



Meta's Montgomery Data Center

The Montgomery Data Center will be part of Meta's global infrastructure that brings our technologies and services to life.

\$800M+

Data center investment in Alabama

~100

Operational jobs supported once completed

1,000+

Skilled trade workers on site at peak construction

We prioritize sustainability



Meta's goal is to be water positive in 2030, where we restore more water than we consume.



Our data centers' electricity use is matched with 100% clean and renewable energy, and our global operations have reached net zero emissions.



Meta-supported projects are adding 227 megawatts of new renewable energy in Alabama.



Meta's global fleet of data centers supports our technologies that empower more than 3 billion people around the world to share ideas, offer support and make a difference.

datacenters.atmeta.com

Meta



Partnering with Alabama

Alabama is home to two of Meta's data centers. While building the Montgomery Data Center, we will source labor and materials locally where we can, and find ways to invest directly in the community.



Supporting local schools and nonprofits

We support the community through our annual Data Center Community Action Grants program and other direct funding for projects that put the power of technology to use for community benefit, give people the power to build strong, sustainable communities, and improve STEAM education. Our grants program will launch when the Montgomery Data Center becomes operational.



Prioritizing sustainability

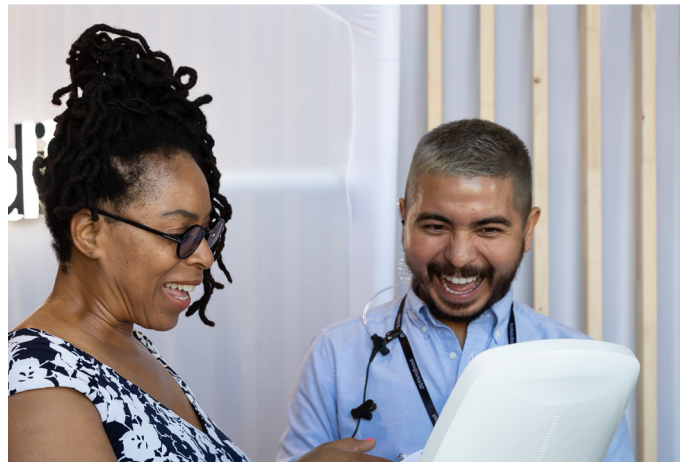
Meta approaches sustainability from the ground up — from design and construction to operations — by prioritizing energy efficiency and renewable energy, water stewardship, and responsibly managing the end of life of our equipment. Our operational data center buildings achieve LEED® Gold certification by focusing on efficiency, sustainability and innovation. In Alabama, we are working with multiple local partners, including Alabama Power Company, to meet our 100% clean and renewable energy goal for the Montgomery Data Center.



Minimizing water use

We are proud to build some of the most sustainable data centers in the world and prioritize on-site water efficiency. The Montgomery Data Center will:

- Use cooling technology that is significantly more water efficient than the industry standard.
- Be landscaped with native vegetation where possible to reduce irrigation demands.
- Capture and infiltrate rainwater on site.
- Incorporate water-saving fixtures and technologies within data center facilities.



facebook.com/MontgomeryDataCenter

